

# Andis® Professional Animal Grooming Shears

## Product Specifications



Description	6.25" Straight Shears	6.5" Thinning Shears	6.5" Curved Ball Tip Shears	8" Curved Shears	8" Straight Shears
Item #	Right Handed: <b>#80680</b>	Right Handed: <b>#80645</b> Left Handed: <b>#80635</b>	Right Handed: <b>#80685</b>	Right Handed: <b>#80670</b> Left Handed: <b>#80625</b>	Right Handed: <b>#80675</b> Left Handed: <b>#80630</b>
UPC	Right Handed: <b>0 40102 80680 3</b>	Right Handed: <b>0 40102 80645 2</b> Left Handed: <b>0 40102 80635 3</b>	Right Handed: <b>0 40102 80685 8</b>	Right Handed: <b>0 40102 80670 4</b> Left Handed: <b>0 40102 80625 4</b>	Right Handed: <b>0 40102 80675 9</b> Left Handed: <b>0 40102 80630 8</b>
Rockwell Hardness	<b>57-58</b>	<b>59-60</b>	<b>55-56</b>	<b>59-60</b>	<b>59-60</b>
Package Dimensions	<b>11.5" H x 4.125" W x 0.625" D</b>	<b>11.5" H x 4.125" W x 0.625" D</b>	<b>11.5" H x 4.125" W x 0.625" D</b>	<b>11.5" H x 4.125" W x 0.625" D</b>	<b>11.5" H x 4.125" W x 0.625" D</b>
Package Weight	<b>0.2 lbs.</b>	<b>0.2 lbs.</b>	<b>0.2 lbs.</b>	<b>0.3 lbs.</b>	<b>0.3 lbs.</b>
Inner Pack Dimensions	<b>5.4" H x 11.9" W x 4.8" D</b>	<b>5.4" H x 11.9" W x 4.8" D</b>	<b>5.4" H x 11.9" W x 4.8" D</b>	<b>5.4" H x 11.9" W x 4.8" D</b>	<b>5.4" H x 11.9" W x 4.8" D</b>
Inner Pack Quantity	<b>6</b>	<b>6</b>	<b>6</b>	<b>6</b>	<b>6</b>
Inner Pack Weight	<b>1.8 lbs.</b>	<b>1.8 lbs.</b>	<b>1.9 lbs.</b>	<b>2.2 lbs.</b>	<b>2.2 lbs.</b>
Standard Pack Dimensions	<b>12.5" H x 16.9" W x 15.625" D</b>	<b>12.5" H x 16.9" W x 15.625" D</b>	<b>12.5" H x 16.9" W x 15.625" D</b>	<b>12.5" H x 16.9" W x 15.625" D</b>	<b>12.5" H x 16.9" W x 15.625" D</b>
Standard Pack Quantity	<b>24</b>	<b>24</b>	<b>24</b>	<b>24</b>	<b>24</b>
Standard Pack Weight	<b>7.5 lbs.</b>	<b>7.5 lbs.</b>	<b>7.8 lbs.</b>	<b>10.1 lbs.</b>	<b>10.1 lbs.</b>
Warranty	<b>One-Year</b>	<b>One-Year</b>	<b>One-Year</b>	<b>One-Year</b>	<b>One-Year</b>
Made in	<b>Taiwan</b>	<b>Taiwan</b>	<b>Taiwan</b>	<b>Taiwan</b>	<b>Taiwan</b>





# Andis® Professional Animal Grooming Shears

**andis**  
every style. every groom. every cut.

- Professional grade withstands heavy use.
- Ergonomic, offset handles designed for all-day use and superior control.
  - Cryogenically tempered Japanese stainless steel precision crafted for heavy use.
    - Convex edges for precision cut.
    - High Rockwell hardness (HRC) value.
- Durable, high-gloss mirror finish resists corrosion.
- Includes oil for maintaining cutting performance.
  - Soft-grip finger inserts for maximum comfort.
  - Convenient storage package.



6.25" Straight Shears



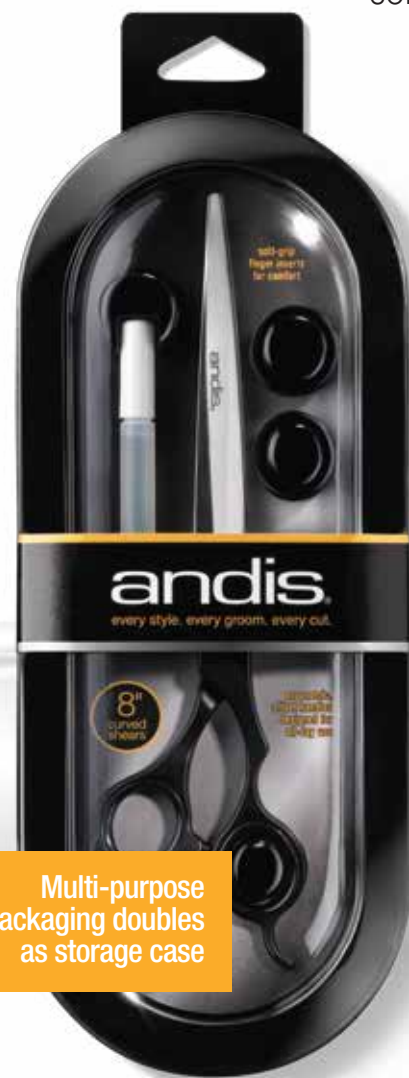
6.5" Thinning Shears

6.5" Curved Ball Tip Shears



8" Curved Shears

8" Straight Shears



Multi-purpose packaging doubles as storage case

## 6.25" Straight Shears

#80680

- Perfect for detail work on small or toy size dogs.
- Use to trim around the feet and over the eyes.
- Small size is easy to navigate when trimming in hard-to-reach spots.
- Ideal para trabajo de detalle en perros pequeños o toy.
- Utilízcela para recortar alrededor de las patas y sobre los ojos.
- El tamaño pequeño permite desplazarse fácilmente al recortar lugares de difícil acceso.
- Parfaite pour un travail précis sur des chiens de taille petite ou miniature.
- Finition autour des pattes et des yeux.
- Petit format facile à utiliser pour atteindre les zones difficiles d'accès.

## 6.5" Thinning Shears

#80645 (Right), #80635 (Left)

- 28-tooth – 6.5" length.
- Great for fine tuning the clipping of wire coats.
- Use to thin and blend.
- Especially effective around the face and eye areas.
- 28 dientes – 6.5" de largo.
- Ideal para recortar detalles en mantos de pelo duro.
- Utilízcela para rebajar y armonizar.
- Especialmente eficaz alrededor de la cara y los ojos.
- 28 dents – 6.5" longueur.
- Parfaite pour finir les poils ébouriffés.
- Pour désépaissir et faire des dégradés.
- Particulièrement efficace sur le museau et autour des yeux.

## 6.5" Curved Ball Tip Shears

#80685

- Ideal for trimming inner ears – no sharp points for a better grooming experience.
- Provides an extra measure of safety for pet grooming.
- Ideal para recortar en el interior de las orejas – no tiene puntas agudas, lo que permite una mejor experiencia de acicalamiento.
- Proporciona una medida adicional de seguridad para el acicalamiento de la mascota.
- Idéale pour couper les poils à l'intérieur des oreilles – pas de pointes saillantes pour une meilleure expérience de toilettage.
- Plus grande marge de sécurité pour le toilettage des animaux.

## 8" Curved Shears

#80670 (Right), #80625 (Left)

- Designed for curved surfaces such as a poodle's head.
- Saves time grooming curved parts of the pet.
- Curved blade is perfect for finishing chest and rib cage.
- Diseñada para superficies curvadas, tales como la cabeza de un caniche.
- Ahorra tiempo al acicalar las partes curvadas de la mascota.
- La hoja curvada es ideal para acabar el pecho y la caja torácica.
- Conçue pour des surfaces incurvées telles que la tête d'un caniche.
- Fait gagner du temps de toilettage sur les parties incurvées de l'animal.
- La lame incurvée est parfaite pour finir la poitrine et la cage thoracique.

## 8" Straight Shears

#80675 (Right), #80630 (Left)

- Best for areas where a long straight cut is needed.
- An all-around general cutting tool for finishing.
- Can be used on all sizes of dogs.
- Ideal para áreas donde se necesitan cortes largos y rectos.
- Una herramienta multiuso general de corte para realizar el acabado.
- Puede utilizarse en perros de todos los tamaños.
- Préférable pour les zones où une coupe longue et droite est nécessaire.
- Outil de finition pour tous les types de coupes.
- Utilisable sur tous les gabarits de chien.